



MTG1000 Series Trunk Gateway

- Flexible configuration of 4 to 32 E1/T1
- Up to 960 concurrent calls
- Intelligent multiple trunk routings
- Both central and standalone remote management
- High Performance-price-ratio VoIP applications

The MTG1000 series is ALLYWLL's carrier-grade medium sized NGN trunk gateway while is a cost-effective, feature-rich and intelligent trunk gateway integrating the best-of-breed VoIP technology. It is designed to connect seamlessly between PSTN and IP network. With the modularization hardware architecture, there are fully install 8 modules total provides 32 E1/T1 with 2U size (IU=44.45mm). It supports SIP/H.323 trunk protocol to connect with SIP/H.323 soft switch, and supports PRI/SS7 signaling protocol to connect with PSTN. Up to 960 channels digital signal processing capacity, it guarantees the maximum performance of 32*E1/T1 trunk gateway. MTG1000 series supports Intelligent Multiple Trunk Routing technology, makes the operator easy to manage trunk routing by price optimum rule, and the automatic switch-over between multiple trunk routing makes the network have high reliability. Basing on service-oriented architecture, rich service functions are supported for VoIP business operation, such as Callback, Calling card, Call shop, Call center and so on, and more and more service functions are customizable for VoIP operator.

FEATURES AND BENEFITS

- **Modularization hardware architecture**

Support up to 8 modules, every module with 4 E1/T1, fully install up to 32 E1/T1. 4/8/12/16* E1/T1 with 1U chassis while 20/24/28/32*E1/T1 with 2U chassis. (1U=44.45mm)

- **High Performance in Concurrent Processing Capacity**

MTG1000 series equipments have enough DSP resources to make sure that all the time slots of E1 can work at the same time. Its concurrent lines of MTG1000QA (16*E1) is 480 and MTG1000QB(32*E1) is 960.

- **Total Protocol Supporting**

MTG1000 series trunk gateway support PRI/SS7/SIP/H.323. Market has proved its adaptability to different application scenarios.

- **Safety and Reliability**

Administrator authentication mechanism; intelligent multiple trunk routing technology, 1+1 power supply redundancy, 1+1 fan. 8 years history, more than 20 thousand E1/T1 lines delivered.

- **Easy Maintenance**

MTG1000 series support to manage standalone by telnet, web. It also supports to be central managed by ALLYWLL Integrated management system (iBMS), and central monitored by SNMP based NMS.

- **Service-orient Architecture, Rich Services Supported**

Provide various services function for operator, for example, callback, call shop, calling card, call center, Fax over IP, etc. The service-orient architecture is in line with the development evolution of telecom technology, satisfies the continuous expanding need in future.

- **High Performance-price-ratio**

8 years mature hardware and software, large scale application, China R&D and manufacturing cost, make it cost-effective choice for customers all over the world.



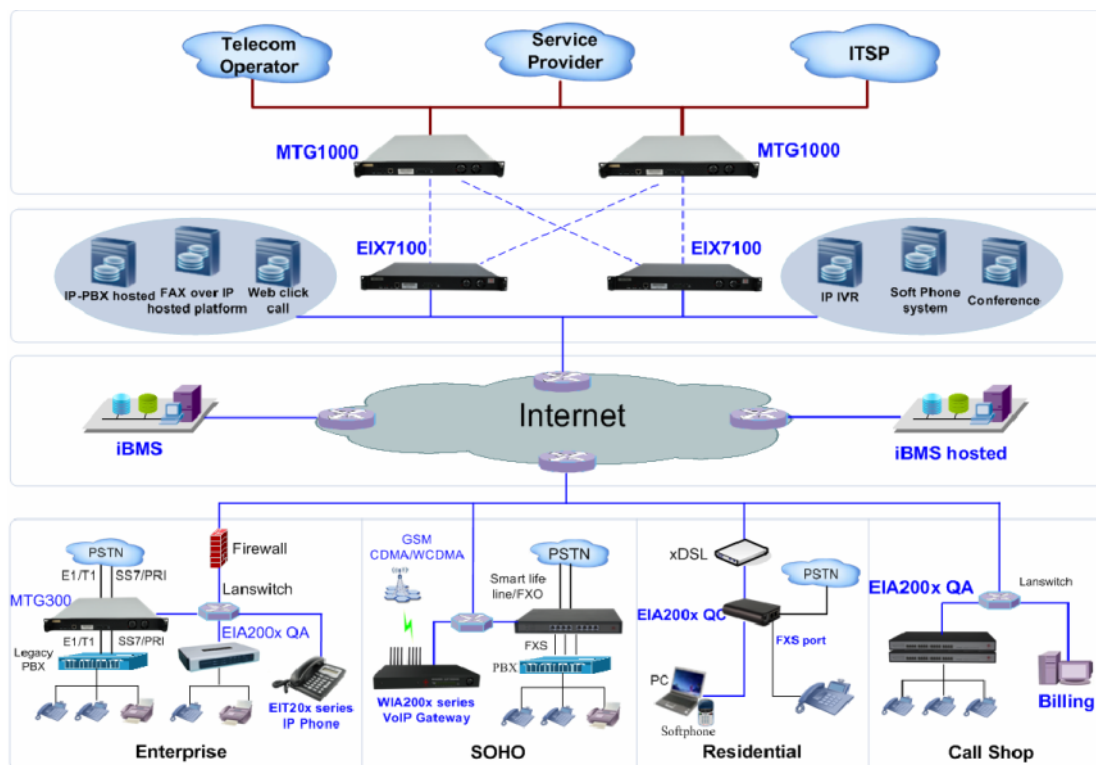
MTG1000 Series Trunk Gateway

TECHNICAL SPECIFICATIONS	
Physical Interfaces 4/8/12/16/20/24/28/32 E1/T1(optional) 2 10/100M Base-T 1 RS232 console port	Enhanced Services <ul style="list-style-type: none"> Powerful Routing Management—Multi routings, saving money and ensure voice quality. Caller number change—Caller ID modify. Time Control—Time-Based service (Optional). UI800 Service (Web Click Call back Service) Call forbidden set. Calling card service. Call center service. Settlement Between Operator and User.
Signaling & Protocols SS7 (ITU-T Q.721~Q.725, ITU-T Q.761~Q.764, Q.730) PRI Signaling <ul style="list-style-type: none"> E1 PRI 30B+D, T1 PRI 23B+D Q.931 / Q.sig, (ITU-T I.430, I.431, Q.921, Q.931) SIP signaling <ul style="list-style-type: none"> RFC3261 SIPv2.0 Support User ID and Password Authentication Peer terminal IP authentication Voice Codec <ul style="list-style-type: none"> G.711, G.723.1, G.729a/b,G.726 Coding: A-law, μ-law Auto codec negotiation Enhanced (Carrier Grade) Echo Cancellation: ITU Rec. G 168, up to 128 ms tail length FAX over IP <ul style="list-style-type: none"> Using industry standard T.38. up to 14.4kbps. Support 2.4, 4.8, 7.2, 9.6, 14.4 Kbps Fax data pump, V.17, V.19, V.27ter, V.29 for T.38 	Security & Availability <ul style="list-style-type: none"> Administrator authentication Package Encryption (Private protocols, only work with ALLYWLL its own IAD and IP phones, to avoid the SIP packet is captured and discarded). 1+1 dual power adapter—built in dual powers, support 1+1 swap (need to switch manually) Fans redundancy —1+1 hot swap. White List Service life time: 20 years MTBF: 20 years MTTR: 5 Mins Calling Established time: <300ms Power-on time: 1 Mins Service availability per line: 99.99%
Network Features <ul style="list-style-type: none"> FreeGo™ - Penetrate NAT/Firewall Up to 960 concurrence VoIP calls Support TCP/UDP, RTP/RTCP, HTTP, ARP/RARP, DNS, NTP, TFTP, TELNET, PPPoE, STUN Static IP Configure. PPPoE Dialup 	Compatibility <ul style="list-style-type: none"> Fully compatible with leading vendors, such as HUAWEI softX3000,C&C08, ZTE ZXSS10, Cisco, Alcatel-Lucent, S12 etc. Compatible with other standard SIP/H.323 server
VoIP Features <ul style="list-style-type: none"> Adaptive Voice Activity Detection (VAD) with Comfort Noise Generation (CNG) Adaptive Jitter Buffer Packet Loss Concealment DTMF Signaling via RFC 2833 or SIP Info SIP Supplementary Services IVR/RADIUS server support for AAA with integrated multi-lingual IVR+ 	Configuration and Management <ul style="list-style-type: none"> Software update online automatically. Web, Telnet configuration SNMP V2 Agent Support Language: English, Simplified Chinese Firmware upgrading by TFTP/FTP Configure file backup and upload Configure file download Monitoring: Running State, Alarm monitoring, Call monitoring, CDR monitoring Central managed by Integrated management system (iBMS)
Standard Services <ul style="list-style-type: none"> Length of phone number setting. Ranges of long number setting. Caller number pool manage. Outgoing route manage. Outgoing route selection rule—Longest called prefix match. District Ban Call Call Flow Control Call Out White List Call ID Modify & Display One Number Service Fax Over IP 	Environment – EMC <ul style="list-style-type: none"> Operational: 32~104F / 0~40°C Storage environment: -4~176F /-20~80°C Humidity, No condensation: 10~90% Stationary use environment: EN 300 019: Class 3.1 Storage environment: EN 300 019: Class 1.2 Transportation environment: EN 300 019: Class 2.3 Acoustic noise: EN 300 753 FCC Part 15 Class B CE EMC directive 2004/108/EC EN55022: 2006+A1:2007 EN61000-3-2: 2006, EN61000-3-3: 1995+A1: 2001+A2: 2005 EN55024: 1998+A1: 2001+A2: 2003 Safety: CE LVD EN60950-1: 2006 Certifications: FCC, CE Resistibility: K.20
Mechanical <ul style="list-style-type: none"> Dimensions (W x D x H): 435 x 580 x 44.5mm (1U) Dimensions (W x D x H): 435 x 580 x 89mm (2U) Net weight: 10Kg/15Kg Gross Weight: 20Kg/26Kg 19" rack compliant, Horizontal mounting, rear cabling 	

MTG1000 Application

With the ALLYWLL's trunk gateway MTG1000, you are poised to take advantage of new opportunities while maintaining the same high service quality and reliability your customers have come to expect from your voice network. Choosing the trunk gateway MTG1000 as your carrier grade medium-size trunk gateway provides a rapid path to the world of Voice over IP (VoIP) solutions while maintaining the same quality and reliability of a TDM network.

The topology of the network is showed as the following picture. Large number of EIX7100, trunk gateway MTG1000, MTG300 and Access gateway EIA are deployed.



Order information:

MTG1000QA Trunk Gateway 4/8/12/16* E1/T1(optional),SS7/PRI/SIP/H.323 with 1U chassis

MTG1000QB Trunk Gateway 20/24/28/32*E1/T1(optional),SS7/PRI/SIP/H.323 with 2U chassis



Headquarter
-ALLYWLL Info & Tech Co., Ltd.

4TH Floor, Novophalt Building, Langshan Road No.2, High-Tech park Nanshan district, Shenzhen 518057, P.R.China

www.allywll.com

Tel: +86-755-61248800

Fax: +86-755-86026719

E-mail: Service@allywll.com